



Sapling Flag Mounted Clocks

A flag mounted clock is a single clock suspended from the ceiling or wall using a mounting bracket and is commonly used in scenarios when installation space is limited or for design reasons.

Common design scenarios for flag mounted clocks would be configurations of three-way facing ceiling mount clocks or four-way facing ceiling mount clocks. Three-way and four-way facing clock options allow for maximum visibility of time, increasing time awareness in high-traffic areas.

Flag Mounted Clock Mounting Brackets

Clocks are offered at different sizes, shapes, and types (analog or digital), and therefore will have different types of mounting brackets. This brochure will provide information about the different options and ordering information.

Detailed installation instructions on how to mount the unit to the wall or ceiling are explained in the clock's manual.



Three-way facing ceiling mount analog clocks



Four-way facing ceiling mount analog clocks



Flag Mount Housing for Sapling Round Analog Clocks

A flag mount **round analog clock** configuration will consist of one (1) double mount housing and one (1) round analog clock. The double mount housing comes with two mounting rings to attach round clocks to the mounting bracket (as this same bracket is also used for a dual faced clock configuration). For a flag mounted configuration, one of the rings is to be removed.



Ordering Information:

For Flag Mount Housing for Round Analog Clocks with SlimLine and Brushed Aluminum cases:

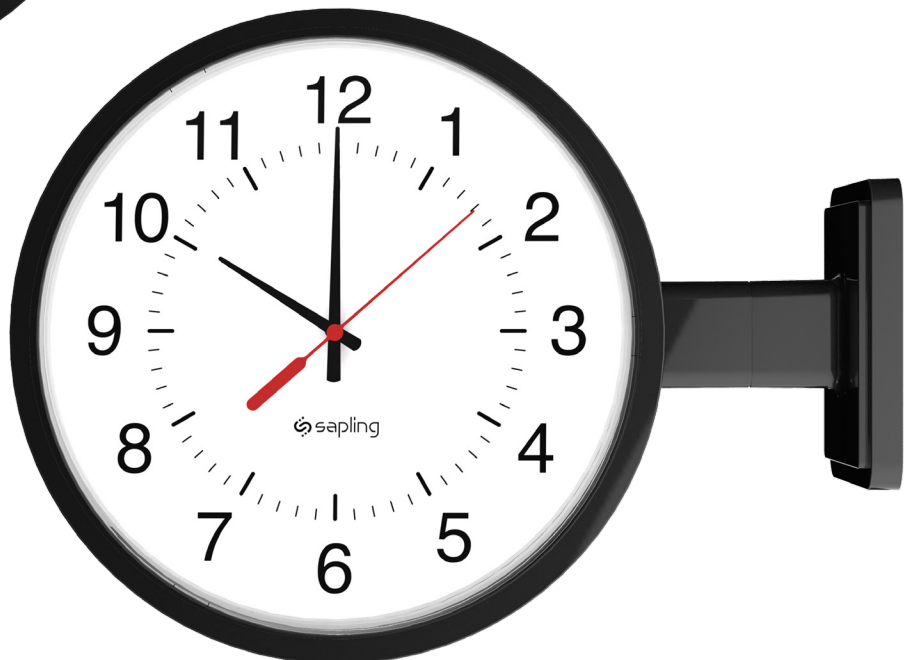
SAH-1BD-XXR-0

Clock Size:
12: 12"
16: 16"

For Flag Mount Housing for Round Analog Clocks with Metal cases:

SAB-1BD-XXR-0M

Clock Size:
12: 12"
16: 16"



The Sapling Company, Inc.

670 Louis Drive, Warminster, Pennsylvania 18974 U.S.A

Phone: +1.215.322.6063 Fax: +1.215.322.8498 Web: www.sapling-inc.com



Mounting Pole for Sapling Flag Mount Standard Size Digital Clocks or Square Analog Clocks

A flag mounted **standard size digital clock** or **square analog clock** configuration will consist of one (1) pole and one (1) clock. The mounting pole is available for the 2.5" or 4.0" digital clocks and the 9" or 12" square analog clocks. The mounting pole is offered at either standard height or short height. The standard pole height allows ceiling or wall mounted dual or flag mounted configuration, while the short pole height is meant for ceiling mounting only and used at locations with low ceiling clearance.

Ordering Information:

For Flag Mount Pole for Digital or Square Clocks:

SAB-1BD-XXS-0

Pole Size: 00: Standard height
01: Short height (ceiling mount only)



The Sapling Company, Inc.

670 Louis Drive, Warminster, Pennsylvania 18974 U.S.A

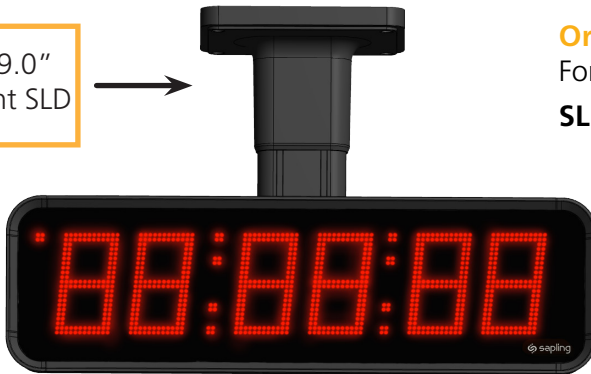
Phone: +1.215.322.6063 Fax: +1.215.322.8498 Web: www.sapling-inc.com



Mounting Pole(s) for Sapling Flag Mount Large Digital Clocks

A flag mount 6.0" or 9.0" **large digital clock** configuration will consist of one (1) mounting pole and one (1) clock. Due to size, a flag mounted 12.0" large digital clock configuration will consist of two (2) mounting poles and one (1) clock.

6.0" or 9.0"
flag mount SLD



Ordering Information:

For Flag Mount Pole Kit for Sapling Large Digital Clocks:

SLD-1FM-XXXY-XZ

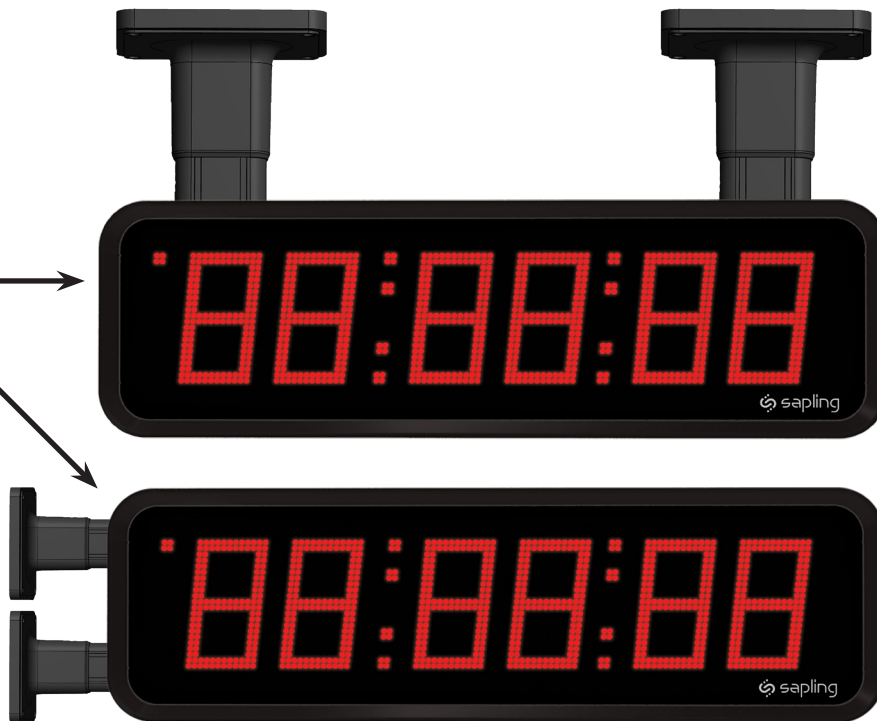
Digit Size:
060: 6.0"
090: 9.0"
120: 12.0"

Clock Orientation:
W: Wall mount
C: Ceiling mount

Pole Length:
S: Standard
C: Custom

Number of Digits:
4: 4 digits
6: 6 digits

12.0"
flag mount SLD



If you have any additional questions, please contact us.

The Sapling Company, Inc.

670 Louis Drive, Warminster, Pennsylvania 18974 U.S.A

Phone: +1.215.322.6063 Fax: +1.215.322.8498 Web: www.sapling-inc.com