

## Sapling Dual Display Clock and Elapsed Timer for Various Applications

Synchronized clocks and Elapsed Timers are commonly used in different types of unique facilities for applications that require the simultaneous viewing of accurate time while timing an event. A synchronized clock system will assure accurate and uniform time throughout the facility increasing the facility's productivity and efficiency.

Depending on the application, in addition to having a synchronized clock in the room, there might also be a need for an elapsed timer. The dual display solution includes one clock that is dedicated to present accurate time, and a second clock that is dedicated to act as an elapsed timer to perform a count-up or countdown. The Sapling Elapsed Timer Clock interfaces with the Sapling Elapsed Timer Control Panel, consisting of four switches allowing:

- Count-Up
- Start / Stop (the count)
- Time
- Countdown

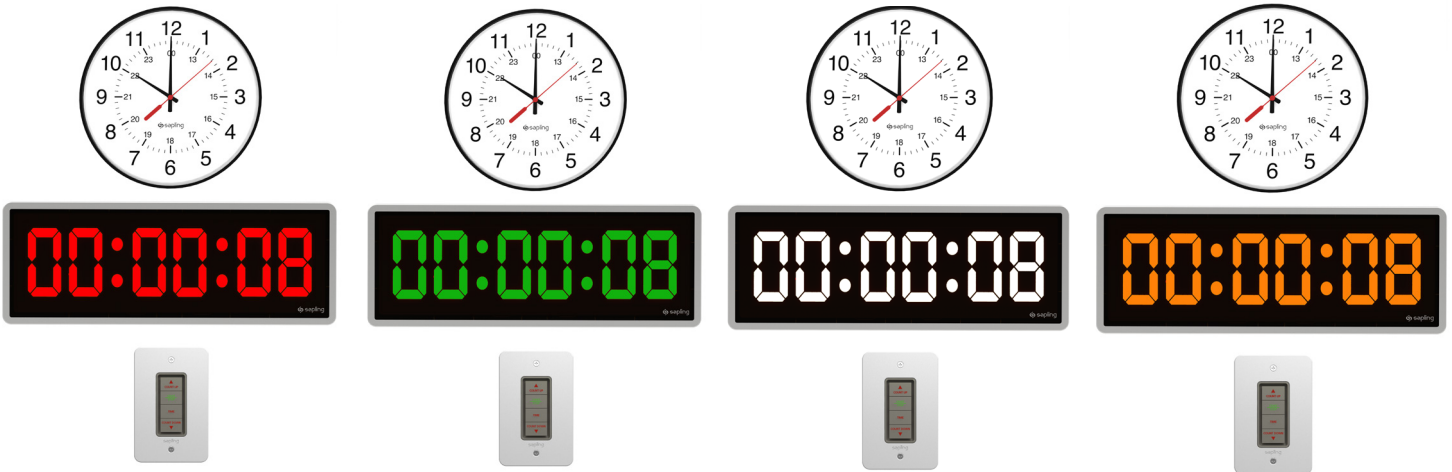


***Elapsed Timer Control Panel Part Number: **SBD-ELT-001-0*****

The dual display solution may be needed in different scenarios, such as: in a classroom to time an exam, in a manufacturing plant to time a process, in a broadcasting station, and for any other application when time awareness with a count-up or a countdown is needed.



One way to implement this solution is to choose one synchronized analog clock dedicated to show the accurate time, and a second digital clock dedicated to act as the elapsed timer. In this scenario, you can choose a Red, Green, White, or Amber digital display.



Another way to implement this solution is to choose two digital clocks. Each can have a different display color. For example, a Red digital clock (model 3100) is dedicated to show the accurate time and the second digital clock (model 3200) is dedicated to act as the elapsed timer and may have a Green, White, or Amber display. In this scenario, the digital clock acting as the elapsed timer (model 3200) will interface with the elapsed timer control panel accessory.



This solution can be offered as part of a Sapling Synchronized Clock System which may be Wired, Wireless or IP based. Depending on the synchronization method, the digital clocks/elapsed timers may be offered with either a surface mounted option (on the wall) or a flush mounted option (in the wall).



**Surface (Wall) Mount**



**Flush Mount**

Sapling can also offer a digital elapsed timer (model 3300) that has the added capability to trigger a buzzer when a countdown (commanded by the elapsed timer control panel) reaches 00:00:00. This will allow additional awareness when the countdown has ended by adding an audible sound created by the buzzer. The buzzer accessory is powered by and installed in the clock. The user can define the sound duration. The buzzer accessory is sold separately (along with a 3300 digital clock model).



**Sapling Buzzer Part Number: [A-BUZZ-3300-1](#)**

Sapling's Elapsed Timer is a versatile tool that can be used in a variety of facilities to suit a variety of applications. From educational institutions to broadcasting stations and healthcare facilities, the Sapling Elapsed Timer offers the best way to count up or down while keeping precise time.

*Please view the Elapsed Timer video clips [here](#).*

**The Sapling Company, Inc.**

670 Louis Drive, Warminster, Pennsylvania 18974 U.S.A

Phone: +1.215.322.6063 Fax: +1.215.322.8498 Web: [www.sapling-inc.com](http://www.sapling-inc.com)