

## Custom Color Clock Casing

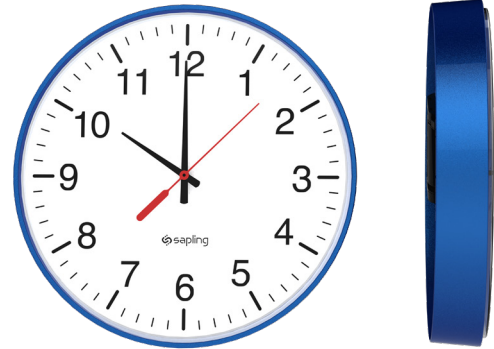
Sapling's synchronized clock systems can be found in schools, hospitals, hotels, corporate centers, transportation terminals and many other industries located all around the world. Sapling offers a number of clock types and color cases as standard. Some customers prefer to match their interior design of a building with a custom colored clock case. Depending on the color requirements, Sapling can explore the option of providing custom color cases for the clocks.

### Sapling Standard Analog Clock Color Options

Sapling's offers both round and square analog clocks.

The round clocks are provided with a black case as standard.

The square clocks have two pieces: The first piece is the back clock case and the second piece is a silver colored metallic rim. The back clock case for the square analog clock is offered in either black or white as standard.



### Sapling Standard Digital Clock Color Options

The digital clocks also have two pieces: The first piece is the back clock case, which is black as standard, and the second piece is a silver colored metallic rim.



### Customization Options

While these are the standard color cases that Sapling's clocks are available in, Sapling's ability to provide custom color cases is dependent on two factors:

1. The quantity ordered: The minimum quantity to place an order for custom color cases is 25 clocks.
2. The color chosen: Custom colors should be selected from the Pantone PMS Color Booklet or the RAL Color Booklet, both of which offer many colors to choose from. It is very important to select a color from the booklet due to the fact that colors differ when viewed on a computer monitor. The best and most accurate way to choose a color is by selecting it from the actual color code booklet.



## Custom Color Clock Casing

### Process of Ordering Custom Color Cases

In order to purchase a custom color case, a few steps are required:

1. After a color is chosen, the customer must place an order for a sample of the clock they are interested in purchasing
2. Sapling will send the customer the sample case with the color they chose for approval
3. Once the customer approves the sample, the entire clock order with the custom color is sent to mass production

**Please Note:** There will be an additional fee added if a project requires the clocks to have custom colors. In addition, there is a longer than standard lead time with custom color clocks depending on the quantity and the color chosen.

### Custom Color Options

#### *For a Round Analog Clock:*

Sapling's round analog clock case is one piece that will be painted entirely in the color chosen

#### *Round Analog Clock Double Mount Housing:*

If a double mount housing for the round analog clocks is required, the double mount housing may be painted to match the clocks.

Please check the project requirements ahead of time to receive the custom color clock case and matching double mount clock housing together.



#### *For a Square Analog Clock:*

Since the square clock housing is made out of two pieces – the back case and the front rim, a customer has a choice between:

1. Painting only the front rim
2. Painting only the back clock case
3. Painting the front rim as well as the back clock case

***This information should be clearly indicated when placing the order for the sample. Most customers are choosing to paint only the rim as shown in the picture. However, all three options are available.***

## Custom Color Clock Casing

### *For Square Clock Double Mount Pole:*

If a double mount pole for the square analog clocks is required, the double mount pole may be painted to match the clocks. Please check the project requirements ahead of time to receive the custom color clock case and matching double mount pole together.



### *For Digital Clocks:*

Since the digital clock housing is made out of two pieces – the back case and the front rim, a customer has a choice between:

1. Painting only the front rim
2. Painting only the back clock case
3. Painting the front rim as well as the back clock case

***This information should be clearly indicated when placing the order for the sample. Most customers are choosing to paint only the rim as shown in the picture. However, all three options are available.***

### *For Digital Clock Double Mount Pole:*

If a double mount pole for the digital clocks is required, the double mount pole may be painted to match the clocks. Please check the project requirements ahead of time to receive the custom color clock case and matching double mount pole together.



Along with providing state-of-the-art synchronized clock systems with a complete line of analog and digital clock products, Sapling also offers a number of options, including clock sizes, specialty dials or hands and custom color cases to meet the needs of many types of facilities. Being able to choose a custom color for the clocks in a system is just another way of showing Sapling's commitment to satisfying our customers.

*If you have any additional questions about custom color cases, please contact your dedicated Sapling representative.*